

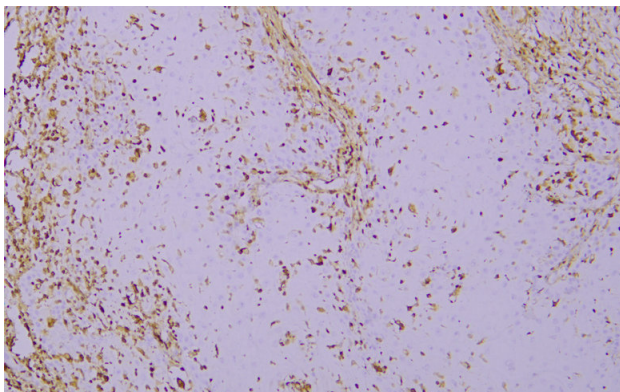


# S100A4 rabbit mAb(ABT178R)

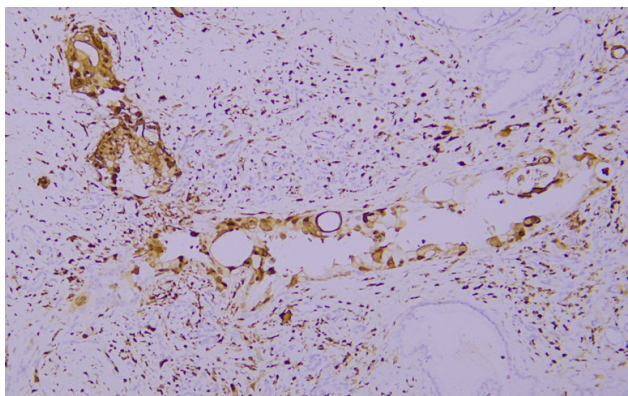
<b>Catalog No</b>	YP-Ab-15499
<b>Isotype</b>	IgG
<b>Reactivity</b>	Human
<b>Applications</b>	IHC;IF
<b>Gene Name</b>	S100A4 CAPL MTS1
<b>Protein Name</b>	S100A4
<b>Immunogen</b>	Synthesized peptide derived from human S100A4
<b>Specificity</b>	This antibody detects endogenous levels of S100A4 at Human
<b>Formulation</b>	Liquid in PBS containing 50% glycerol, 0.5% BSA and 0.02% sodium azide.
<b>Source</b>	Polyclonal, Rabbit,IgG
<b>Purification</b>	The antibody was affinity-purified from Cell supernatant by affinity-chromatography using specific immunogen.
<b>Dilution</b>	IHC-p 1:200. IF 1:50-200
<b>Concentration</b>	1 mg/ml
<b>Purity</b>	≥90%
<b>Storage Stability</b>	-20°C/1 year
<b>Synonyms</b>	Protein S100-A4 (Calvasculin;Metastasin;Placental calcium-binding protein;Protein Mts1;S100 calcium-binding protein A4)
<b>Observed Band</b>	
<b>Cell Pathway</b>	Secreted . Nucleus . Cytoplasm .
<b>Tissue Specificity</b>	Ubiquitously expressed.
<b>Function</b>	similarity:Belongs to the S-100 family.,similarity:Contains 2 EF-hand domains.,subunit:Homodimer. Interacts with PPFIBP1 in a calcium-dependent mode.,tissue specificity:Ubiquitously expressed.,
<b>Background</b>	
<b>matters needing attention</b>	Avoid repeated freezing and thawing!
<b>Usage suggestions</b>	This product can be used in immunological reaction related experiments. For more information, please consult technical personnel.



## Products Images



Immunohistochemical analysis of paraffin-embedded human Cutaneous squamous carcinoma. 1, Antibody was incubated at 4° overnight. 2, Citrate buffer of pH6.0 was used for antigen retrieval. 3, Secondary antibody was diluted at 1:200 (room temperature, 30min).



Immunohistochemical analysis of paraffin-embedded human Pancreatic carcinoma. 1, Antibody was incubated at 4° overnight. 2, Citrate buffer of pH6.0 was used for antigen retrieval. 3, Secondary antibody was diluted at 1:200 (room temperature, 30min).